

Jan - Mar 2014

Volume 3
Issue 1

UNEP-IEMP *Bulletin*

MISSION

To provide science, technology, policy and capacity support to developing countries to integrate ecosystem management approach into their national policies and development plans to enhance the delivery of ecosystem services for human well-being.

MANDATE

To synthesize science findings for decision-making on ecosystem management and is supported by three inter-related initiatives:

1. Capacity Building and Technology Transfer
2. Making the Case through Assessment and Demonstration
3. Enhancing Science Policy Interface

UNEP-IEMP Bulletin will be issued on a quarterly basis to inform you of our achievements and lessons learned through activities and projects executed. Please feel free to share with us your feedback to further improve our work and the information shared with you. Please forward these directly to info@unep-iemp.org

Baseline Assessment Mission in Lamjung District, Nepal

By Dr. Chao Fu, UNEP-IEMP Post-Doctoral Research Fellow

Local communities in developing countries across Africa and Asia-Pacific are particularly vulnerable to climate change due to high rates of poverty, dependence on agriculture, and ecosystem degradation. In addition, they have limited capacity for technologies that facilitate adaptation to climate change. The GEF-SCCF project developed by UNEP and NDRC "Enhancing capacity, knowledge and technology support to build climate resilience of vulnerable developing countries" aims to address these vulnerabilities through three main components; capacity building, knowledge sharing, and technology transfer. As part of the latter component, concrete EBA interventions will be implemented in three pilot countries; Nepal, Mauritania and Seychelles.

To kick-start on-the-ground efforts, a baseline assessment and site selection mission was conducted in the Lamjung District in Nepal in December 2013. This mission aimed to undertake five main activities; (1) select sites for on-the-ground interventions,

Continued on page 2...

Inside this issue:

Baseline Assessment Mission in Lamjung District, Nepal	2
Baseline Assessment Mission in Mauritania	3
Strengthening Collaboration with UNEP Regional Offices	4
Dialogue on Chinese Environmental Concepts & the Emerging Age Sustainable Development	4
New Staff	5
New Publication	5



International consultants of the project discussing with Nepalese experts on how to implement watershed conservation activities, especially those in agro-ecosystems at the Chiti Village Development Committees, Lamjung District, Nepal (a potential demonstration site for the project). © Patrick Augenstein

Cont'd from front page...

(2) assess the suitability of the project's indicators and targets, (3) consider whether these indicators and targets are appropriate (using SMART criteria), (4) collect baseline data for the indicators, in line with the long-term research aims of the project, and (5) identify data gaps for project inception and Monitoring and Evaluation (M&E), and develop methodologies to address any existing gaps.

Four potential sites were suggested for project activities. At each of these sites, the team conducted household surveys, site walks/vegetation observations and workshops with local communities to collect baseline information including: (i) household-level vulnerability; (ii) current agriculture and land use; and (iii) forest condition and natural resource use. The workshops aimed to collect first-hand data on effects of climate change being experienced, agricultural practices; natural resources that are collected from community forests; and their willingness to be involved in and contribute to project activities.



View of one of the project sites (Site 1) in the Chiti Village Development Committees showing the terraced, agricultural land. © C4EcoSolutions



View of Site 2 in Jita and Taksar Village Development Committees © C4EcoSolutions



Tea growing area at Site 3 in Baglungpani Village Development Committees © C4EcoSolutions



Tea nurseries at Site 4 in Uttarkanya Village Development Committees © C4EcoSolutions



Workshop conducted with local communities during the in-country baseline study mission, Nepal. © C4EcoSolutions

The information collected during the field visit was used to; (i) measure the baseline vulnerability of each potential site; (ii) conduct a site selection to priority sites using a set of criteria; and (iii) recommend preferred sites and suitable project activities.

Significant findings from the mission observations and the post-mission data analysis, recommended the following activities for on-the-ground interventions;

- (i) reforestation of bare, degraded slopes with useful tree species in Site 2;
- (ii) enrichment planting of useful tree species in community forests in Site 1; and
- (iii) Agro-EBA activities that decrease erosion and promote soil conservation in Site 1.

Baseline Assessment Mission in Trarza & Inchiri Regions and the outskirts of Nouakchott City

By Dr. Belarmain Fandohan, UNEP-IEMP Post-Doctoral Research Associate

In late February 2014, a baseline field mission was conducted in Mauritania. Project interventions will be implemented in Trarza, Inchiri and the outskirts of Nouakchott City to build on the baseline projects of OUBAME and PSPVN. The objectives of the mission was two-fold:

1. Using field observations to re-view project indicators and targets. This included a literature review; consultations with key stakeholders on questionnaires for household surveys and project progress and activities, as well as undertaking additional spatial mapping of project sites.
2. Conduct baseline surveys and collect baseline data for the appropriate indicators. This included undertaking field surveys to assess the present state of the ecosystems; engaging with local community members to assess the suitability of proposed interventions; and conducting socio-economic surveys using questionnaires in order to assess the current vulnerability of local communities to climate change. During the mission, communities in the proposed project areas were visited and surveyed to support



Acacia Raddiana and Acacia Senegal stands in the Trarza region. © C4EcoSolutions



Calotropis procera, a highly drought tolerant species standing alone in the desert. © C4EcoSolutions

The municipalities of Aoujeft, Trarza, Inchiri, Barbara, Legleita and Benmoura were identified as probable sites for on the ground restoration activities. Key lessons learned during the mission key to the project's success include:

1. The need to balance grass and tree density in the restoration plots providing the local water balance;
2. Need for fencing to ensure sustainable and concerted use of the established stands;
3. Since Arabic gum trees (Acacia) start producing about five years after planting, to ensure that local communities especially women will take ownership and contribute to protect the juvenile plants, it will be important to support theme by creating market gardens near the fenced plantations.

Though the mission was short yet successful, we were really pleased to enjoy the hospitality of the Mauritanian colleagues and have a taste of dates and other local delicacies.

the selection of the most appropriate sites for the EBA interventions. The following UNEP EBA Decision Support Framework (DSF) criteria was used to identify potential areas for project interventions:

1. Community leadership/social networks;
2. Willingness of the communities to try new approaches;
3. Existing capacity development of investments which a potential adaptation initiative could be linked to;
4. Return on investment likely to be greatest; and
5. Accessibility, in light of the need for on-going monitoring.

Through a nine-day baseline field mission, several stakeholders meetings were undertaken. Three sites were visited (mainly in the vicinities of Nouakchott, Trarza and Inchiri). The mission revealed that a certain number of restoration activities were previously undertaken with tangible useful outputs.



Acacia Arabic gum, used as a thickening agent in icing, fillings, chewing gum and other confectionery treats © C4EcoSolutions

Strengthening Collaboration with UNEP Regional Offices



UNEP-IEMP and UNEP Delegation teams during the collaborative meeting © Cao Hui

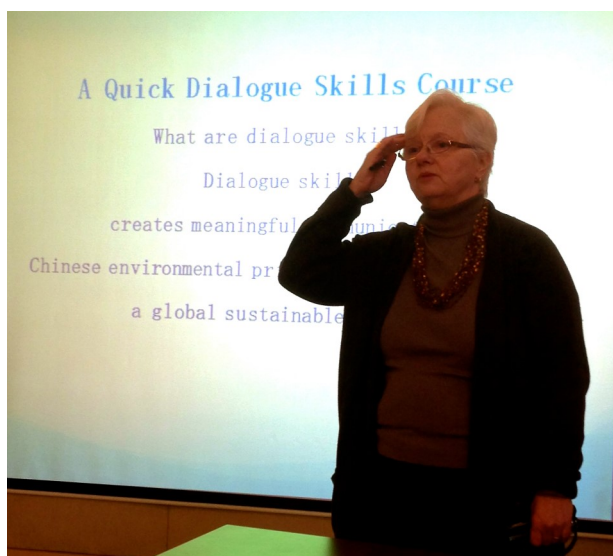
A UNEP Delegation team composed of Mr. Kaveh Zahedi, Regional Director for Asia and the Pacific (Head of Delegation); Ms. Brennan van Dyke, Director of Resource Mobilization, UNEP; Ms. Tomoko Nishimoto, Director and Special Advisor on South-South Cooperation; and Mr. Shigang Zhang, UNEP China Coordinator, made a visit to UNEP-IEMP.

The main objective of the meeting was to explore avenues for stronger collaboration between UNEP regional offices and Collaborating Centres. This visit came at an opportune time as UNEP is in the process of implementing the decisions from the Rio+20 conference.

The outcome document contains issues of critical importance to UNEP, such as the upgrading and strengthening of UNEP as an organization. In addition, the Rio conference called for the strengthening of UNEP's regional presence and focus is shifting to regional offices and collaborating centres and their capacities to deliver and support countries. With the success of the South-South Development Expo in Nairobi, Kenya, there is increased efforts to include the concept of South-South Cooperation in all activities within the UNEP Programme of Work, and this is a great avenue for UNEP-IEMP to be a part of and explore.

Dialogue on Chinese Environmental Concepts and the Emerging Age

Sustainable Development - By Olga Kislyakova



Ms. Stephanie Tansey during the skills development dialogue
© Olga Kislyakova

UNEP-IEMP in conjunction with Institute of Geographic Sciences and Natural Resources Research, CAS hosted a workshop on "Skills Development in Dialogue" on 24 January 2014 in Beijing, China. Stephanie Tansey and XueXue from the Earth Charter Communities gave participants a short course on dialogue skills and engaged everyone in exercises that highlighted a difference well-mastered dialogue skills in cooperation with local efforts could make in addressing global problems. Earth Charter Communities Network, L3C (ECCN) is a social enterprise that uses dialogue to help people design and develop lifelong sustainable lifestyles. Nature education or symbiosis, is the centre of all dialogue and at the heart of ECCN education. Ms. Tansey believes that before all else, human beings are all part of nature. Re-centring of the life of the human being enables a person to reach their full potential, to

Continued on next page...

trust and be trustworthy, to strengthen the compassion, wisdom and courage to discern the dignity of life in others. Such a person can then powerfully contribute to nature, one's community and the planet because there is the heart-felt desire to do so. As global problems become more complex, such workshops become a useful aid in establishing deep connections with nature and the inner self, bringing out the importance of traditional wisdom to its proper place in a global society, and helping move communication from argument and debate to collaboration.



Dr. Jian Liu, UNEP-IEMP Director introducing Ms. Stephanie Tansey during the skills development dialogue © Olga Kislyakova

New staff



Dr. Ye Liu joins UNEP-IEMP as a post-doctoral fellow. She has more than five years experience in scientific research on regional sustainable development after having received her PHD in natural geographical sciences. At UNEP-IEMP, she will research on Eastern African natural reserves using the Ecosystem Service and Society Investigation method that will later be used to improve the livelihoods in related classical areas and protect Africa ecosystems in National Parks and National reserves.



Ms. Jiayi Zhang joins UNEP-IEMP as an intern. She is currently pursuing a Bachelor of Arts degree in Economics & Mathematics and with a minor in Philosophy at the Colby College, USA. Her interests lie in ecology and wildlife conservation, as well as green economy. At UNEP-IEMP, she will be assisting with the GEF-SCCF project management and communication activities.



Ms. Liang Yunjie joins UNEP-IEMP as an intern. She is an English major at the Zhejiang University of Finance & Economics. Her interests lie in ecosystem management and climate change. She will assist the communications team at UNEP-IEMP in translation of various documentations and the website. She hopes to gain practical experience through her time with us.



New Publication

ANNUAL REPORT 2013

2013 marked the first year of operation as an official UNEP Collaborating Centre in the South and for the South. The report details UNEP-IEMPs work in providing science, technology, capacity and policy support to developing countries.

UNEP - International Ecosystem Management Partnership
C/o Institute of Geographic Sciences and Natural Resources Research
11A Datun Road, Beijing, 100101, China

Tel: +86 10 64889031, Email: info@unep-iemp.org



Clear flowing stream at the south foot of the of the Himalayas mountains in Lamjung District, Nepal © Patrick Augenstein

A production of the UNEP - International Ecosystem Management Partnership

Editorial Manager: Karen Mrema

C/o Institute of Geographic Sciences and Natural Resources Research
11A Datun Road, Beijing, 100101, China

Email: karen.mrema@unep-temp.org